

2019-2020 Annual Report





ABOUT US

The Edward Milne Community School Society is a registered charity that has been serving the community of Sooke for over 30 years. A community school is a gathering place for people of all ages and provides a range of needs-based programming and services coordinated through community and school partnerships.

Since 1987, the EMCS Society Program Office has worked to build partnerships with individuals and organizations in the community to provide learning opportunities for people of all ages, facilitate health and nutrition programs, provide youth programs and events, host fundraisers, manage facility rentals, and foster literacy in the Sooke Region. The Society also oversees community cultural and social programs developed to meet the needs of the community and optimize educational outcomes for vulnerable students.

BOARD OF DIRECTORS

Willy Burrows, President
Britt Santowski, Vice-President
Susan Percival, Treasurer
Secretary - TBD
Loretta Duetscher, Director
Laura Fulton, Director



Community Education



Curriculum Enhancement



Facility Rentals



Health Programs



Literacy Programs



Youth Recreation & Leadership



Fundraisers & Events

BEHIND THE WORK: EMCS SOCIETY STAFF

2019-2020 has truly been a year of ever-changing circumstances and forging new possibilities!

Sasha Gale started in September of 2019 and went on maternity leave in March of 2020. She welcomed a healthy baby boy shortly thereafter in April. Stepping into her shoes is Ashley Green, who started her role just as the COVID-19 pandemic started. As a result of the social distancing measures, the Society was forced to lay off many of its hardworking staff. Our recently hired Makerspace Coordinator, Kayla Yearwood; our Duty Host, Sheila Lang; our Theatre Coordinator, Steve Anderson; and temporarily our capable Office Administrator, Aimee McIntosh and LOC – Sarah Richer. At the helm is the steadfast Anne Bell who continues to guide us through turbulent times with grace and optimism.

We are energized by the board's shared commitment to raise our collective vision, values, and voice to forge new possibilities in 2020. While we will continue to offer some of our mainstay programs, we are innovating and strategizing ways the Society will deliver results-based community programming within the new reality of social distancing.

STAFF



Anne Bell
*Community School
Coordinator*



Sasha Gale
*Community School
Coordinator*



Ashley Green
*Community School
Coordinator*



Aimee McIntosh
*Program Office
Assistant*

Dianne Chiasson
Accountant

Steve Anderson
Theatre Coordinator

Alyssa Taylor, Jann Joslin
& Jason Mason
Theatre Techs

Sarah Richer
*Literacy Outreach Coordinator -
Sooke*

Sheila Lang
Duty Host

Matthew Kemshaw
Garden Coordinator

Tim Ross
Summer Youth Engagement Coordinator

Alison Hill, Marion Stupich
& Rhys Pugh
Play & Learn Camp Coordinators

Emma Denhoff & Aaliyah Nghady - *Play & Learn Youth Mentors*

Kyla Lovbakke - *Play & Learn Youth Leader*

Mitra Evans - *Literacy Outreach Coordinator - Westshore*

Kayla Yearwood - *Makerspace Coordinator*

Katelyn Kennedy and Carly Bryson - *Westshore/Sooke Youth
Engagement Coordinators*

COORDINATOR'S REPORT

This past year, the EMCS Society has experienced a myriad of successes and challenges. Sasha Gale started last fall as the Community School Coordinator and then went on maternity leave in the spring to welcome her new baby boy. Ashley Green has stepped into her role just as the COVID-19 pandemic shut down the schools. The ever-capable Anne Bell has been aiding in the employee and pandemic transition, alongside our dedicated Board and Leadership team.

The fall of 2019 offered some great community learning opportunities and the Society worked hard to put together some Makerspace classes. In early 2020, we hired a Makerspace Coordinator, Kayla Yearwood, to help deliver regular hours and classes. We partnered with the Boys and Girls Club of Victoria to offer a 10 week parenting class in the New Year. We also became the fiscal host for a new garden program to enhance youth food literacy and healthy school food systems through garden learning. The garden coordinator, Matthew Kemshaw, has been hard at work creating food and generating some exciting future prospects for the program. We offered some healthy cooking food courses to seniors and continue to administer the Good Food Box locally. We have purchased, along with the School District and the District of Sooke, and received the new seats for the Community Theatre that will be installed, along with some additional upgrades, this coming year. We became the fiscal host for the Westshore Literacy Outreach Coordinator and continued to work closely with the Sooke Literacy Outreach Coordinator. We wrapped up our Youth Engagement contracts with Carly Bryson and Katelyn Kennedy in the early summer. They compiled some great data to share with the community that informs what local youth want to see in their communities and will help us with future offerings. We were able to run the Summer Play and Learn Camp this year, and even with some modifications to the programming, it was truly a success! We hired three teachers to work with the children and 3 youth as well, which speaks to the success of this camp. We also were able to hire a Summer Youth Engagement Coordinator who hosted a myriad of well-attended youth events in the region. Finally, the EMCS Society is involved with a locally produced documentary film project to tell the story of the whale skeleton that adorns the EMCS commons. A remarkable group of talented volunteers is putting together a Whale of a Tale!

In April, we had to lay-off most of our staff due to the pandemic. We have been re-aligning our priorities and re-imagining the future of the EMCS Society. Strengthening our existing offerings and deepening our relationships with other local organizations has been our primary focus. This has been an eventful year, to say the least, and we would like to extend our thanks to our talented and passionate staff and volunteers. This wouldn't be possible without you!

With gratitude,

Anne Bell & Ashley Green

Community School Coordinators



PRESIDENT'S MESSAGE

WILLY BURROWS

We are now living in a world that has been turned upside down by Covid-19. A lot of changes have happened since March when the pandemic was declared. School was shut down, programs were cancelled and people were laid off.

Since then the EMCS Society has adapted to the pandemic and re-invented the wheel in order to carry on. I'd like to mention some of the highlights of what the EMCS Society has been up to before and after the pandemic:

- Ordered and paid for theatre seats that are in storage until an opportune time for them to be installed.
- Ashley Green replaced Sasha Gale (Sasha is on maternity leave). Thank you, Ashley.
- Aimee has come back to work part-time in the Community Office.
- The Play and Learn Camp went ahead. Several youth attended and it was a success. I think it's fantastic that it actually happened.
- Diane and Anne are trying to keep the budget and finances straight.
- Jeff is coordinating with individuals to make a documentary called "Tale of a Whale".

I've enjoyed listening to Laura talk about what's happening in the school with the youth and school staff. She's very passionate about her job.

A big thank you to Anne Bell, who is the nerve centre of all that happens. She keeps things running smoothly and keeps me informed (a large job!)

In closing, as President, I'd like to extend a thank you to our 2019/20 colleagues: Vice President Britt Santowski, Treasurer Susan Percival and directors-at-large Loretta Deutscher and Laura Fulton. Our meetings continue to be graced by a range of other engaged individuals, among them *Sooke PocketNews* publisher Britt Santowski, our Sooke Chamber of Commerce liaison Les Haddad and SD #62 trustees Bob Phillips, Margot Swinburnson and Allison Watson. We're also joined on an ad hoc basis by various Society members who have paid a slim toonie for the right to participate in board meetings and help shape our path forward. Membership is open to anyone/everyone in Sooke, so please consider joining us and contributing whatever time, ideas and energy you can spare.



PRINCIPAL'S MESSAGE

LAURA FULTON

The 2019/20 school year was certainly a unique one! While we needed to shift gears in March when schools were closed to in-person learning, the EMCS community remained strong. Staff were committed to working alongside students and parents to ensure that we created the best possible learning opportunities. We have continued to modify our learning environment to meet provincial

health regulations. We are learning a great deal as we move through this experience – I am confident that, in the long run, our school will be even better than it was before!

The 2019/20 graduating class were a remarkable group! Their ability to adapt to remote learning and an entirely different graduation ceremony was impressive. They also put extra effort into applying for scholarships. Community generosity was also at an all-time high in regards to helping our students enter into their post secondary studies. As a group, they earned over \$210 000 in scholarship funds.

Interest in a wide and balanced range of programs continues to remain strong at EMCS. Grade 12 students are also fully engaged in pursuing their individual interests through the now well-established Capstone program. In addition to our excellent academic, arts and athletic pursuits, our applied skills staff has added a new program to their department. We are now a leader in offering a Trades, Skills, Awareness and Knowledge Program in Metal and Welding. In the spring, teachers scrambled to quickly set up remote learning options. Professional development regarding online tools and reassessing what is most important in each curricular area moved at lightning speed. Our current model sees students taking courses face to face, one course at a time. Early feedback indicates that many students appreciate the ability to focus on one learning area. This model has also allowed for a sharper emphasis on relationship building between teachers, students and parents/guardians.

EMCS received several upgrades to its physical facility during 2019/20 school year:

- The exterior staircase leading to the upstairs hallway was power washed and painted.
- Landscaping in front of the school significantly upgraded, complementing the new sidewalk installed by the District of Sooke.
- New fence in the main parking lot.
- The Sooke School District, District of Sooke and EMCS Society teamed up to purchase new seats for our theatre! New stage working lights will also be installed.
- New monitors for our upstairs computer lab.
- Thanks to a \$25 000 grant from the Canadian Welding Board, the Metal Task program was able to purchase new equipment, including a state-of-the-art portable welding machine.

Student enrolment has remained strong at EMCS. There will be a dip in International enrolment in the 2020/21 school year owing to border closures. We have enrolled a small number of international students who had visas secured prior to March or stayed in Canada after March 2020. We hope that additional international students will join the school this spring.

LITERACY OUTREACH

Books for Breakfast is a preschool story time program that runs once a month in both Sooke and East Sooke from September to May. Snacks are provided and each family is given a book to take home. Due to COVID-19 this offering was put on hold as of March this year. Presently, we are moving forward to create a website for Literacy Offerings in Sooke and will be moving Books for Breakfast into an on-line offering through our website with other story time and literacy building activities.

The Book Bin program distributes approximately 7,500 books to the community in a year. Currently, there are six bins: two at SEAPARC, two at the Sooke Family Resource Society, one at EMCS, one at T'Sou-ke Nation, and one at the Pacheedaht Nation in Port Renfrew. As a result of the pandemic, all of these have been put into storage within the facilities they are located.

Family Literacy Day

To celebrate the week of National Family Literacy Day, the Sooke Region Literacy Project (SRLP) partnered with the Sooke Rotary and VIRL Sooke Branch to host string storyteller Anne Glover for one of her award winning performances that include storytelling through string shapes and a teaching portion where children learn to make string shapes themselves, and discussed (for the parents) the benefits of kinesthetic activities on brain development and improving learning in other subject areas. The event was entitled Wintertime Dreaming, and was very well attended, with over 30 children and 25 adults attending the performance.



Sarah Richer
LITERACY OUTREACH COORDINATOR



WESTSHORE LITERACY

Westshore Literacy provides the Westshore with a one stop hub for literacy programs and information. Our vision is to create a supportive community that promotes engaging literacy opportunities for all, and encourages exploration, discovery and enjoyment of life to the fullest.

Currently we facilitate a Books for Breakfast and Literacy for Lunch program that services hundreds of families in the Westshore area. Due to COVID-19 we have moved our programs online via the zoom platform. Due to the outstanding number of sign ups for this event, we ask that families sign up through our email. We have seen a significant increase in participation during the past year.

Our online program runs for 30 minutes and includes a story time, music and movement for young children and their families.

We also facilitate an outdoor Story Walk for families in various locations. This allows for social distancing while giving parents and caregivers an opportunity to enjoy nature walks with their children. These are always well attended and we will plan to do more during the winter months.

We have also increased our social media sites in order to offer more supports and direction for Westshore families during this pandemic. Our Instagram, Twitter and Facebook page are listed under Westshore Literacy. Please follow us for up to date information on literacy programs in the Westshore.

Our book distribution program has been on hold due to COVID-19. We hope to resume this program once restrictions are lifted.

2020 has had many challenges, however, Westshore Literacy has worked hard to find alternative ways to meet community needs in the best way possible through our online platforms.



Mitra Evans
LITERACY OUTREACH COORDINATOR WESTSHORE

The idea of a Sooke Makerspace was brought to the EMCS Society by a small group of community members, and seed funding was provided by a donor through the United Way of Greater Victoria. Support for this vast project was graciously given by United Way, the School District, EMCS staff, EMCSS staff and multitudes of volunteers. Makerspace officially opened in November 2018.

The Sooke Makerspace consists of a workshop, eventually a computer/robotics and electronics lab, tech shop, and arts and crafts space in the textiles room. Conventional tools and equipment as well as cutting-edge technology such as a 3-D Printer, and a CNC (Cutting Numerical Control) machine are available for use.

The Makerspace is for all adults looking to explore new passions in the Sooke region – DIYers, hobbyists, tinkers, artists, building entrepreneurs, young adults, seniors, and anyone curious about the latest technology. It is a place where people can socialize, work individually or collaboratively on projects, and share skills and knowledge – all to facilitate the making of things.

Interest stalled with volunteers and opening hours in the summer and fall of 2019, so our aim was to fill the space and spark community awareness through offering an amazing roster of classes starting in the new year. Thanks to a generous \$20,000 grant from the Telus Friendly Future Foundation, we hired Kayla Yearwood (a former Makerspace Volunteer and furniture maker) to start as our Makerspace Coordinator. She took over volunteer recruitment and development, as well as oversaw orientations, volunteer staffing and new shop purchases. Due to COVID – 19, we had to lay Kayla off as we couldn't access the facility and don't have a plan for re-opening. Both Telus and the United Way have been kept up to date with the situation and all of us are excited to re-open this creative haven.



Kayla Yearwood
Makerspace Coordinator



GARDEN COORDINATOR

The Garden Coordinator works closely with a primary point person in each school: EMCS, Belmont Secondary, Royal Bay Secondary, and Westshore Annex. This core team works together to inform priorities and goals for the Garden Coordinator and the EMCS Society is the fiscal host for the position. Matthew Kemshaw has been supporting garden maintenance, electronic educational resource development, regularly harvesting and distributing food to school meal programs and local food banks. Finally, bee habitats have been established at 3 school sites.

EMCS Garden Improvements include:

- Irrigation system overhaul.
- Invasive weed control and soil building.
- Regular spring harvests taken to COVID meal distribution for families.
- 6 teachers keenly interested in integrating garden into curriculum, including: applied sciences, food studies, sustainability, PE and Life Skills.



Matthew Kemshaw
Garden Coordinator

PLAY & LEARN SUMMER CAMP

Play and Learn Summer Camp, now in its tenth year, provides a rich play-based learning environment for four weeks, immersing children in literacy and numeracy activities designed to foster their existing academic skills, and to improve their self-confidence and enjoyment in these subject areas. The program is invariably a huge success.

This year, the program was funded by the EMCS Society, Pacific Institute for the Mathematical Sciences, the Rotary Club of Sooke, Excellence in Literacy Foundation, Decoda Literacy Solutions – Sooke Region Literacy Task Group, School District No. 62 (Sooke), Sooke Harbourside Lions, HRSDC (Canada Youth Summer Jobs), and The Edith Lando Charitable Foundation. These funders made it possible to offer the camp to families at no charge.

There was a total of 22 children registered, and all children attended the camp from four participating schools: Saseenos Elementary, Sooke Elementary, L'Ecole Poirier Elementary, and John Muir Elementary. The grade listed below indicates the level the child was in this past school year. There were 6 children who were of Aboriginal descent and 12 children who were from low income families. This year the camp was set up differently, because of Covid-19. The children were placed into two groups – a morning group and an afternoon group. Each group was comprised of 12 children (a.m. group) and 10 children (p.m. group), and staff worked diligently to meet the guidelines and safety protocols as set out by public health.

Three coordinators facilitated the camp, leading Literacy, Recreation, and Numeracy. The camp coordinators met prior to the beginning of the camp to discuss schedules, field trips, and expectations for the camp and children. This year required additional meetings with school district staff and camp staff. The 2020 camp again took place at Sooke Elementary School, which is the perfect site with classrooms that allowed flexibility for learning. Everything at the school is properly sized for this age group, and we have now been at this location for five years. The children are a lot more comfortable and confident when in this setting. They enjoyed the two playgrounds, the fields, and the gym. It is also centrally located for parents, providing a more physically and financially accessible location than previous years. Sooke Elementary is also within walking distance of SEAPARC Leisure Complex, where the campers used the back trails and the golf course.

Wildly successful field trips this year included beach days to: China Beach, Witty's Lagoon, French Beach and Aylard Farm.



Quantitative and qualitative measurements show this camp is a huge success and asset in our community. Funding and logistical support from diverse sources speaks to Sooke's considerable commitment to education and literacy.

Female	Male	Aboriginal	Low Income	Grade One	Grade Two	Grade Three
5	17	6	11	10	7	5

YOUTH ENGAGEMENT

Tim Ross, an EMCS grad, excelled as our *Summer Youth Engagement Coordinator*. He was hired, with assistance, through the HRSDC Canada Summer Jobs initiative. He had extra hurdles this year to run successful programs during the pandemic and truly rose to the occasion.

He started by creating a youth-friendly brand called “Youth for Sooke” and built social media accounts on both Facebook and Instagram. He advertised the new sites by hosting an on-line photo competition. He followed project up with running a 2-day BMX bike clinic at the Q Centre which saw a total attendance of 22 participants. In mid-August he hosted a free 3-day tennis clinic in Sooke which sold out its 8 spots each day. His final event was to host a beach clean-up at Whiffin Spit and Ella Beach. With support from youth, a lot of garbage was removed and many positive accolades came from the community.

Tim helped create a youth-friendly survey that will be administered this fall in combination with the Sooke Region Community Health Network and the District of Sooke to help inform future development and youth engagement efforts. We thank Tim for his tireless enthusiasm, and flexibility, and wish him the best as he begins university this fall.



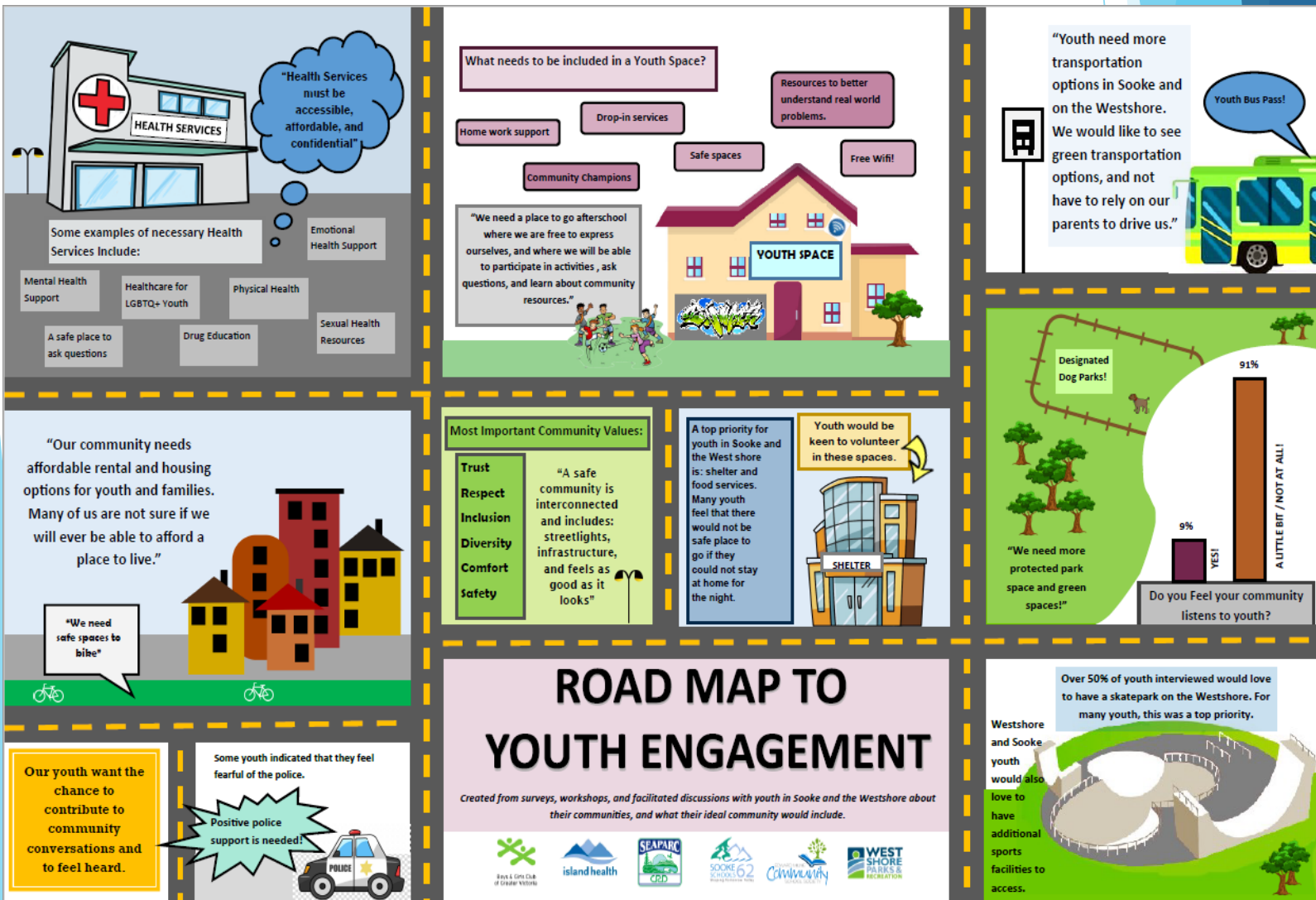
Tim Ross
Summer Youth
Engagement Coordinator



YOUTH ENGAGEMENT

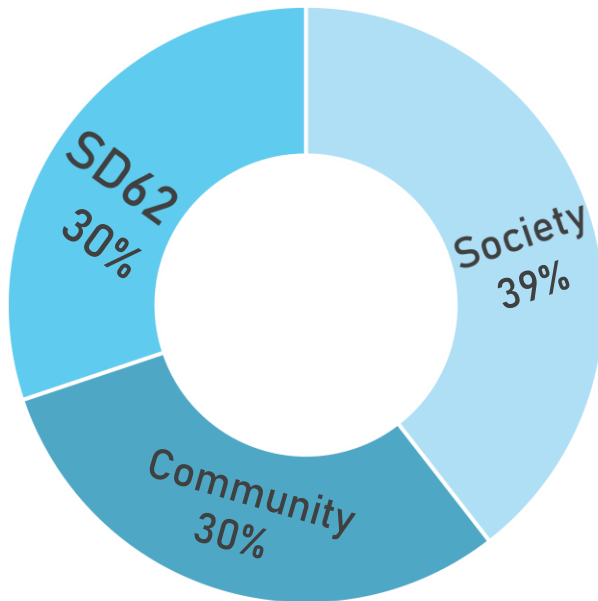
This year we wrapped up our *Youth Engagement Coordinator* position aimed at enhancing and increasing the capacity of current service providers' ability to meaningfully engage and empower youth in the region. This term contract position was grant funded, and fiscally hosted by the EMCS Society, and in partnership with Island Health, SEAPARC Leisure Complex, Boys and Girls Club of Greater Victoria, West Shore Parks and Recreation, and School District No. 62 (Sooke). This position was staffed by Katelyn Kennedy and Carly Bryson, the Youth Recreation Coordinator for Westshore Parks and Recreation.

The youth engagement project supported youth, and youth service providers in the Sooke and Westshore area to discuss their communities, learn engagement strategies, share successes and challenges, and work toward becoming a more inclusive and engaged community. The research stage gave facilitators time to learn about the region and about the current status of youth engagement. In the education stage, a training session was provided for youth service providers. Data collection involved meeting with youth groups to share and learn together. Finally, result sharing included the creation of a one-page infographic, social media page, and an informational video.



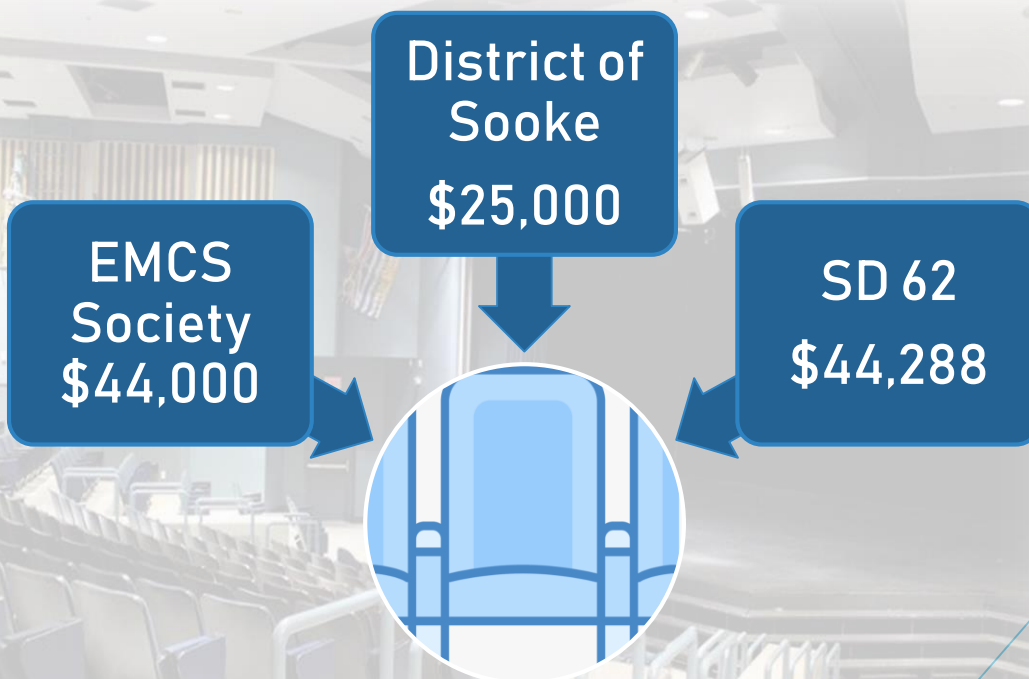


THEATRE USE



Community Theatre Event Highlights 2019-2020

- Cinderella - Sooke Harbour Players
- Sooke Talks, Valdy - EMCS Society
- All Candidates Meeting for Canadian Federal Election - Sooke Chamber of Commerce
- Awareness Film Night & International Film Night - Jo Phillips
- Gord Phillips Band
- Halloween & Christmas Movie Nights Leadership Group
- After School Theatre Tech Class - Lisa and Paul McLellan
- Winter band Concert - Laurel Parliament
- John Muir Christmas Concert
- Norman Foote Concert
Ecole Poirier and Sooke Elementary
- Grad Fashion Show- Reisha Williams



**TOTAL COST FOR NEW THEATRE SEATS =
\$113,288**

**DELIVERED FALL 2020 AND INSTALLATION
SLOTTED FOR 2020/2021**



WHALE OF A TALE

- ~ To produce a short documentary film about the spirit of community.
- ~ To celebrate the anniversary marking the Edward Milne Community School's (EMCS) 33rd anniversary.
- ~ To inspire viewers about education that occurs in community settings and what can be learned from honouring the overlapping of natural and human (Indigenous and settler) communities.
- ~ To showcase the uniqueness of Sooke in terms of its diverse community, assets, peoples and geography.

The edited film will include interviews and archival photos detailing the process as the whale was flensed, carcass sunk, bare bones skeleton retrieved, school opening and the installation of the skeleton at the new school. It will be a rich document of voice, visuals, music, narrative and current footage.

Work to Date

- ✓ All interviews complete
- ✓ All filming complete
- ✓ Digitizing archival photos and video
- ✓ Uploading all video to online storage and editing service
- ✓ All transcribing complete
- ✓ First draft of script complete

Work Remaining

- ☐ Complete all editing
- ☐ Finalize script
- ☐ Acquire music
- ☐ Continue to raise funds
- ☐ Host screening event
- ☐ Create reproductions
- ☐ Thank our volunteers profusely for their hard work and dedication!

~Made Possible by Generous Funding From~

SD 62, EMCS Society, Walmart, Sooke Rotary,
and private donations

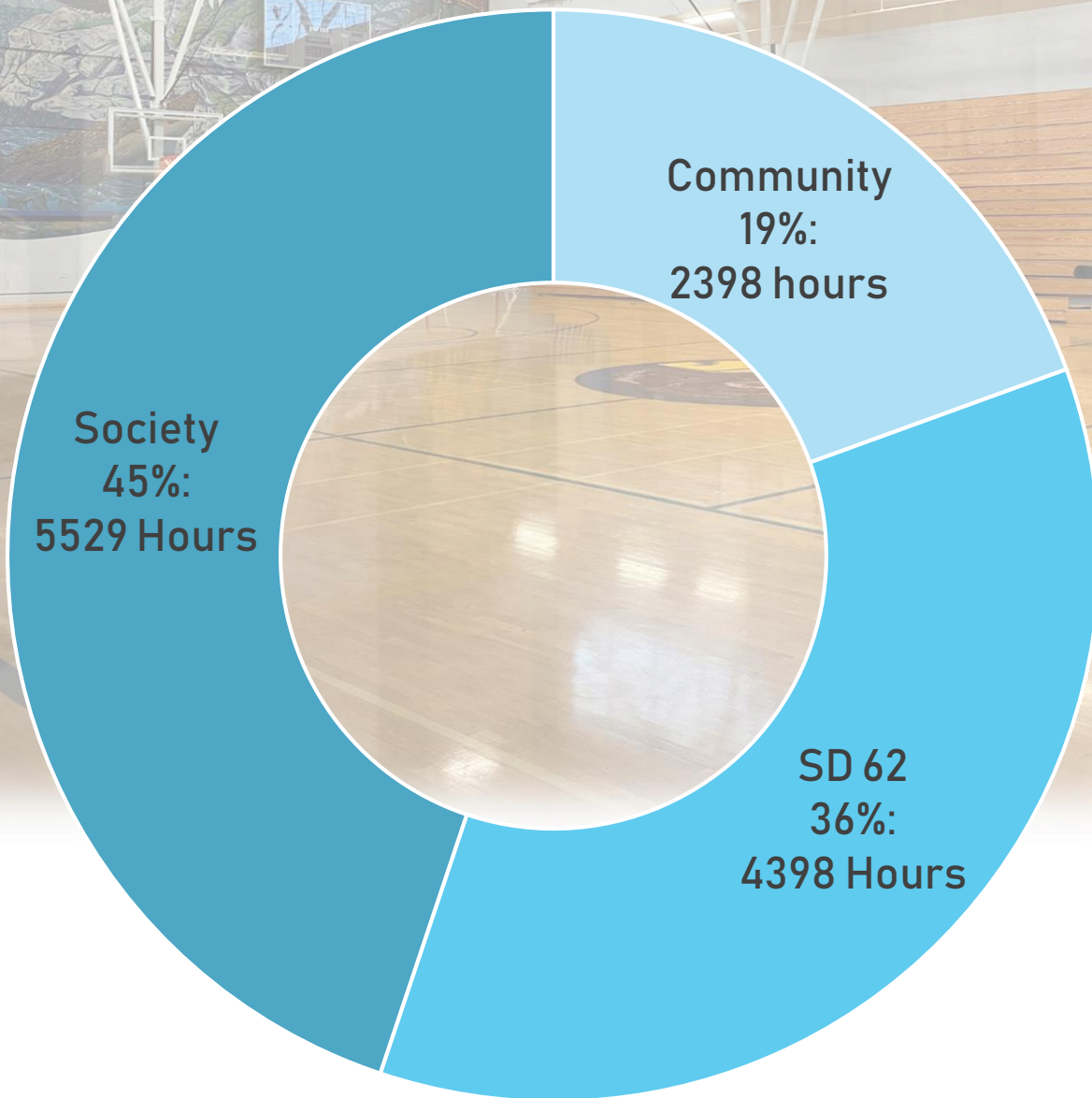
~And the Dedicated Team:~

Jeff Bateman, Phoebe Dunbar, Elizabeth Lange, Frank Antonsen,
Loretta Deutscher, Ashley Green, Corey Vink



FACILITY USE

**Total Hours Booked:
12,325***



***This does not include theatre hours.
Thanks to Aimee for her careful
work tracking facility use for the
Sooke region.**



COMMUNITY EDUCATION

Community Education Highlights	Participants
Lean Team: runs year round	125
Yoga for Kids: offered 3 times	26
Macrame Kids Workshop	3
Guitar for Beginners	3
Basic Woodworking	6
Standard First Aid: offered three times	44
Food Safe: offered 3 times	36
Pro-D Day Basketball Camp	25
American Sign Language	4

Makerspace Classes	Participants
Make Earrings	4
Make a Necklace	8
Make your own Facial Serum	7

Overall Statistics	
Total Courses Advertised	80
Total Courses Run	53
Cancelled due to COVID-19	14
Total Revenue from Classes 2019-2020	17,420
Total Revenue from Classes 2018-2019	30,400
Total Revenue from Classes 2017-2018	23,000





HEALTH & NUTRITION

116

GOOD FOOD
BOX ORDERS

14

COOKING OUT OF
THE BOX
PARTICIPANTS

12

BOXES PAID FOR
BY EMCS SOCIETY
ANNUALLY



OUTREACH

108

NEW PAGE LIKES ON
FACEBOOK
(672 likes, 753 follow)



NEW BRAND FOR
YOUTH EVENTS

93 Likes
99 Follow



160 Instagram
followers



SCHOOL SUPPORT

\$4,798

EMCS SOCIETY
CONTRIBUTION

165

WELLNESS CENTRE SNACKS

135

BUS PASSES

300

LUNCH PUNCH PASSES

**On behalf of us all at the
EMCS Society:**

**THANK YOU FOR YOUR
CONTINUED SUPPORT AND
PARTICIPATION!**



Q & A

EDWARD MILNE COMMUNITY SCHOOL SOCIETY

FINANCIAL STATEMENTS

(Unaudited-See Notice to Reader)

JUNE 30, 2020

INDEX

- 2- Notice to Reader Engagement Report
- 3- Statement 1 – Revenues & Expenditures Statement
- 4- Statement 1A – Operating & Gaming Detail Summary
- 5- Statement 1B – Projects Detail Summary
- 6- Statement 2 – Investment in Capital Assets
- 7- Balance Sheet
- 8- Notes to the Financial Statements
- 9- Schedule 1 – Continuity of Reserves

Dianne Chiasson, Accountant

Dianne Chiasson

Accountant
947 Deloume Road
Mill Bay, B.C. V0R 2P1

Phone: 250-886-2010
E-Mail: dianne9@shaw.ca

NOTICE TO READER ENGAGEMENT REPORT

To: THE DIRECTORS,
EDWARD MILNE COMMUNITY SCHOOL SOCIETY

I have compiled the balance sheet of Edward Milne Community School Society as at June 30, 2020 and the statements of revenues and expenditures for the year then ended from information provided by the Society. I have not audited, reviewed or otherwise attempted to verify the accuracy or completeness of such information. Readers are cautioned that these statements may not be appropriate for their purposes.



Accountant

Mill Bay, B. C.
September 15, 2020

EDWARD MILNE COMMUNITY SCHOOL SOCIETY
STATEMENT OF REVENUES AND EXPENDITURES
(Unaudited-See Notice to Reader)
FOR THE YEAR ENDED, JUNE 30, 2020

	<u>2020</u>	<u>2019</u>
REVENUES (Note 1)		
Operating (See Statement 1A) (Notes 2(a) & 6)	\$ 55,849	\$ 57,523
Operating - Unrestricted Projects (See Statement 1A) (Notes 2(a),3(c), 6)	39,169	15,515
Gaming- Externally Restricted (See Statement 1B) (Notes 2(a), 3(b), 6)	15,003	20,005
Projects-Externally Restricted Funds (See Statement 1B) (Notes 2(a),3(c),Note 6)	101,843	160,010
	<hr/>	<hr/>
	\$ 211,864	\$ 253,053
EXPENDITURES (Note 1)		
Operating (See Statement 1A) (Notes 2(a), 6)	\$ 52,091	\$ 61,442
Operating - Unrestricted Projects (See Statement 1A) (Notes 2(a),3(c), 6)	17,508	53,753
Gaming- Externally Restricted (See Statement 1B) (Notes 2(a), 3(b), 6)	18,959	20,891
Projects-Externally Restricted Funds (See Statement 1B) (Notes 2(a),3(c), 6)	158,541	55,238
	<hr/>	<hr/>
	247,099	191,324
Increase (Decrease) in Funds Held for Specific Purposes		
Operating	3,759	(3,919)
Operating - Unrestricted Projects (Notes 2(a),3(c), 6)	21,660	(38,238)
Gaming- Externally Restricted (Notes 2(a), 3(b), 6)	(3,956)	(886)
Projects-Externally Restricted Funds (Notes 2(a),3(c),Note 6)	(56,698)	104,772
	<hr/>	<hr/>
	\$ 211,864	\$ 253,053

**EDWARD MILNE COMMUNITY SCHOOL SOCIETY
OPERATING AND UNRESTRICTED FUNDS PROJECTS SUMMARY
FOR THE YEAR ENDED, JUNE 30, 2020
(Y-E JUNE 30, 2019 COMPARATIVE FIGURES)**

												Statement 1A	
					Theatre Project	Theatre Project	Maker Space		Community Fundraising	Community Fundraising	Whale of a Tale	Totals	
	2020	2019	2020	2019	2020	2019	2020	2019	2020	2019	2020	2020	2019
Balances Forward, JULY 1, 2019	\$ 70,961	\$ 74,879	\$ 7,696	\$ 40,947	\$ 1,728	\$ 4,949	\$ 756	\$ 1,088	\$ 1,000	\$ 2,437	\$ -	\$ 82,142	\$ 124,300
Revenues													
-Grants (Note 5)	5,000	5,000	-	-	-	-	20,000	-	-	-	3,500	28,500	5,000
-Course Revenues	17,420	30,404	-	-	-	-	796	1,799	-	-	-	18,216	32,203
-Coordinating Fees	10,469	3,504	-	-	-	-	-	-	-	-	-	10,469	3,504
-Rent	19,493	17,068	3,887	9,531	885	25	250	-	-	-	-	24,515	26,624
-Donations-In-Kind	-	-	-	-	-	-	-	-	-	-	-	-	-
-Donations (Note 5)	2,703	368	-	-	-	-	-	47	-	-	250	2,953	415
-Community Events	-	-	-	2,988	-	-	-	-	8,548	393	-	8,548	3,381
-Sales	-	-	-	-	-	-	-	-	-	-	-	-	-
-Miscellaneous	-	-	-	-	-	-	-	-	-	-	-	-	-
-Membership	58	58	-	-	-	-	35	724	-	-	-	93	782
-Interest	24	37	18	8	-	-	-	-	-	-	-	42	46
-Bad Debt Recovery	-	-	-	-	-	-	-	-	-	-	-	-	-
-GST Recovery	682	1,085	-	-	-	-	-	-	-	-	-	682	1,085
Total Revenues	55,849	57,524	3,905	12,528	885	25	21,081	2,570	8,548	393	3,750	94,018	73,039
Expenditures													
-Wage -Assistant	10,763	14,294	-	-	-	-	-	-	-	-	-	10,763	14,294
-Wage Benefits - Rec. Gen./WCB	1,175	2,786	-	-	-	-	-	-	-	-	-	1,175	2,786
-Wage - Duty Host (Incl. Wage Benefits)	979	2,859	-	-	-	-	-	-	-	-	-	979	2,859
-Wage -Makerspace	-	-	-	-	-	-	2,675	-	-	-	-	2,675	-
-Wage- Bookkeeping	5,475	5,915	-	-	-	-	-	-	-	-	-	5,475	5,915
-Accounting	3,727	2,552	-	-	-	-	-	-	-	-	-	3,727	2,552
-Advertising/Promotion	361	2,994	-	-	-	-	-	-	-	-	-	361	2,994
-Custodial	1,833	184	-	245	-	-	-	-	-	-	-	1,833	429
-Supplies-Equipment-Tel/Fax	2,698	2,119	-	154	-	-	35	858	-	-	-	2,733	3,131
-Course Expense	11,666	17,961	-	-	-	-	973	740	-	-	-	12,639	18,701
-Staff/Board Development/AGM	476	393	-	-	-	-	-	-	-	-	-	476	393
-Bank Charges	1,168	1,204	-	-	-	-	3	6	-	-	-	1,171	1,210
-Honoraria/Gifts	214	332	-	-	-	-	-	-	-	-	-	214	332
-Dues/Membership	268	225	-	-	-	-	-	-	-	-	-	268	225
-Insurance-Directors/Officers	510	510	-	-	-	-	-	-	-	-	-	510	510
-Miscellaneous	166	20	-	66	-	-	-	-	-	-	-	166	86
-Mileage	100	-	-	-	-	-	-	-	-	-	-	100	-
-Project Costs	-	-	-	-	-	-	2,241	1,296	5,794	262	586	8,621	1,558
-Online Data Management/Website	2,042	1,975	-	-	-	-	-	-	-	-	-	2,042	1,975
-Community Link Supports	4,798	4,828	-	-	-	-	-	-	-	-	-	4,798	4,828
-Donations	2,672	291	-	205	-	-	-	-	-	1,568	-	2,672	2,064
-Theatre - Equipment Purchases	-	-	-	1,681	650	3,246	-	-	-	-	-	650	4,926
-Technician-Theatre	-	-	1,798	3,428	-	-	-	-	-	-	-	1,798	3,428
Total Expenditures	51,091	61,442	1,798	5,778	650	3,246	5,927	2,901	5,794	1,830	586	65,846	75,197
-Transfer Theatre Seats to Restricted Use Funds				(40,000)								-	(40,000)
-Transfer to Whale of a Tale Project	(1,000)										1,000	-	-
-Transfer to Theatre Seats-Valdy									(1,715)			(1,715)	-
-Transfer to Theatre Seats-Sooke Talks 2019									(1,039)			(1,039)	-
												-	-
Balances as at, JUNE 30, 2020	\$ 74,720	\$ 70,961	\$ 9,803	\$ 7,696	\$ 1,963	\$ 1,728	\$ 15,910	\$ 756	\$ 1,000	\$ 1,000	\$ 4,164	\$ 107,561	\$ 82,142
4													

EDWARD MILNE COMMUNITY SCHOOL SOCIETY
EXTERNALLY
RESTRICTED FUNDS - PROJECTS SUMMARY
FOR THE YEAR ENDED, JUNE 30, 2020
(Comparative figures as at June 30, 2019)

																						Statement 1B	
								Literacy	Literacy	Literacy				EMCSS	EMCSS	West Shore	West Shore	Literacy	Literacy	SD#62			
					Play-Learn	Play-Learn	Play-Learn	Outreach	Outreach	Outreach	Youth	Youth		Theatre	Theatre	Sooke	Sooke	Displaced	Displaced	(Sooke)			
	Gaming	Gaming	Good	Good	Camp	Camp	Camp	Coordinator	Coordinator	Coordinator	Engagement	Engagement		Project	Project	Youth	Youth	Workers	Workers	Garden	Totals	Totals	
	2020	2019	Food Box	Food Box	July, 2020	July, 2019	JULY, 2018	Programs	& Programs	West Shore	2020	2019		2020	2019	Engagement	Engagement	2020	2019	Project	2020	2019	
Balances Forward-JULY 1, 2019	\$ 23,728	\$ 24,614	\$ 12,875	\$ 12,504	\$ -	\$ 46,910	\$ 41,670	\$ 17,628	\$ 19,992	\$ -	\$ 10,750	\$ 7,082	\$ 40,000	\$ -	\$ 47,856	\$ -	\$ 10,000	\$ -	\$ -	\$ -	\$ 209,747	\$ 105,862	
Revenues																							
-Grants (Note 5)	15,000	20,000	-	-	18,583	480	18,547	17,544	20,344	15,931	4,546	11,595	-	-	-	47,856	10,000	10,000	16,500	98,584	128,342		
-Program Revenues	-	-	5,071	7,925	-	-	-	-	-	-	-	-	1,277	-	-	-	-	-	-	6,348	7,925		
-Bank Interest	3	5	-	-	-	-	-	-	-	-	-	-	-	-	-	-	-	-	-	3	5		
-Donations (Note 5)	-	-	-	-	31	1,000	188	-	-	-	350	104	-	-	-	-	-	-	-	1,381	292		
-Fundraising Projects	-	-	-	-	-	-	-	-	-	-	776	450	-	-	-	-	-	-	-	776	450		
Total Revenues	15,003	20,005	5,071	7,925	18,614	1,480	18,735	17,544	20,344	15,931	5,672	12,149	1,277	-	-	47,856	10,000	10,000	16,500	107,092	137,015		
Expenditures																							
-Wage - Projects	11,967	15,123	-	-	-	23,877	20,753	8,384	7,475	6,480	4,289	6,845	-	-	26,368	-	3,523	-	13,472	98,360	50,196		
-Accounting	5,103	3,338	-	-	-	-	-	-	-	-	-	-	-	-	-	-	-	-	-	5,103	3,938		
-Advertising/Promotion	1,158	45	-	-	-	-	-	-	-	-	-	-	-	-	-	-	-	-	-	1,158	45		
-Office Supplies, etc	731	1,785	-	-	-	-	-	-	-	-	-	-	-	-	-	-	-	-	-	731	1,785		
-Donation - Paid Out	-	-	-	-	-	-	-	-	-	-	350	-	-	-	-	-	-	-	-	350	-		
-Project Costs	-	-	4,637	7,554	-	6,889	5,742	2,977	5,234	-	1,346	1,636	44,031	-	7,850	-	1,185	-	383	69,298	20,166		
Total Expenditures	18,959	20,391	4,637	7,554	-	30,766	26,495	11,361	12,709	6,480	5,985	8,481	44,031	-	34,218	-	4,708	-	13,855	175,000	76,129		
Adjustments/Transfers																							
-Brought Forward, P&L Camp July,2020	-	-	-	-	17,624	(17,624)	-	-	-	-	-	-	-	-	-	-	-	-	-	-	-		
-Funding transferred from 2020 Commu	-	-	-	-	4,500	-	3,000	-	-	-	-	-	-	-	-	-	-	-	-	-	4,500	3,000	
-Trans funds from Operating-Theatre Se	-	-	-	-	-	-	-	-	-	-	-	-	-	-	40,000	-	-	-	-	-	-	40,000	
-Trans to Theatre Seats-Fundraising Eve	-	-	-	-	-	-	-	-	-	-	-	-	-	2,754	-	-	-	-	-	-	2,754	-	
-Trans funds from Literacy Project Fund	-	-	-	-	2,500	-	10,000	(2,500)	(10,000)	-	-	-	-	-	-	-	-	-	-	-	-	-	
Total Adjustments/Transfers	-	-	-	-	24,624	(17,624)	13,000	(2,500)	(10,000)	-	-	-	2,754	40,000	-	-	-	-	-	-	7,254	43,000	
Balances as at JUNE 30, 2020	\$ 19,772	\$ 23,728	\$ 13,309	\$ 12,875	\$ 43,238	\$ -	\$ 46,910	\$ 21,311	\$ 17,628	\$ 9,451	\$ 10,437	\$ 10,750	\$ -	\$ 40,000	\$ 13,638	\$ 47,856	\$ 15,292	\$ 10,000	\$ 2,645	\$ 149,093	\$ 209,747		
5																				Dianne Chiasson,	Accountant		

EDWARD MILNE COMMUNITY SCHOOL SOCIETY
STATEMENT OF INVESTMENT IN CAPITAL ASSETS
(Unaudited-See Notice to Reader)
FOR THE YEAR ENDED, JUNE 30, 2020

	<u>2020</u>	<u>2019</u>
BALANCE, beginning of the year	\$ 44,623	\$ 39,697
Plus: Theatre Equipment	650	4,926
Office Equipment	-	-
	<hr/>	<hr/>
BALANCE, end of the year - (Note 2(b) & 4)	<u>\$ 45,273</u>	<u>\$ 44,623</u>

EDWARD MILNE COMMUNITY SCHOOL SOCIETY

BALANCE SHEET
(Unaudited-See Notice to Reader)

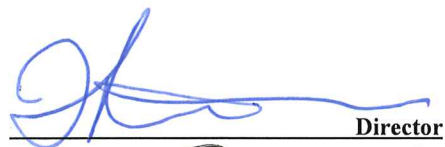
JUNE 30, 2020

ASSETS

	<u>2020</u>	<u>2019</u>
CURRENT		
Cash - Operating Funds	\$ 112,955	\$ 80,624
- Restricted Funds - VIHA-IHN-Pass Program (Note 3(c))	1,530	1,530
Accounts Receivable	21,522	37,799
Prepaid Expense	-	500
Cash Held for Specific Purposes		
- Operating -Restricted Projects- (Note 3(c), 6)	15,953	11,182
- Gaming (Note 2(a), 6)	19,772	23,728
- Restricted Projects- (Note 3(c) & Note 6)	137,338	143,400
	<u>309,070</u>	<u>298,763</u>
RESTRICTED INVESTMENTS - Trusts (Notes 2&3)	8,514	8,519
CAPITAL ASSETS (Notes 2 & 4)	<u>45,273</u>	<u>44,623</u>
	<u>\$ 362,857</u>	<u>\$ 351,905</u>

LIABILITIES AND EQUITY

CURRENT		
Accounts Payable and Accrued Liabilities	\$ 50,887	\$ 5,344
Deferred Funds Held for Future Purposes (Notes 2(a))		
- Operating (Statement 1A)	\$ 74,720	
- Operating Unrestricted Projects (Statement 1A)(Notes 3(c), 6)	<u>32,840</u>	107,560
		82,143
- Externally Restricted Gaming (Statement 1B) (Notes 2(a), 3(b), 6)	\$ 19,772	
- Externally Restricted Projects (Statement 1B) (Note 3(c), 6)	<u>129,321</u>	149,093
		209,746
VIHA-IHN-Pass Program-Restricted (Note 3(c))	<u>1,530</u>	<u>1,530</u>
	<u>309,070</u>	<u>298,763</u>
RESERVE FUNDS (Notes 2& 3)(Schedule 1)	8,514	8,519
EQUITY		
Investment in Capital Assets (Statement 2)	45,273	44,623
	<u>\$ 362,857</u>	<u>\$ 351,905</u>


Director


Director

EDWARD MILNE COMMUNITY SCHOOL SOCIETY

NOTES TO THE FINANCIAL STATEMENTS
(Unaudited-See Notice to Reader)

FOR THE YEAR ENDED, JUNE 30, 2020

1. NATURE OF ORGANIZATION

The organization is incorporated under the Society's Act of British Columbia. Its goals and objectives include providing community education and leisure programs for youth and adults of the Sooke Region. These financial statements do not include any revenues, expenditures, assets or liabilities of the Edward Milne Community School, which is part of the Sooke School District #62.

2. SIGNIFICANT ACCOUNTING POLICIES

a) Revenue and Expenses

Revenue and expenses are recorded according to the accrual basis of accounting, except donations and gaming revenues, which are recorded when received. Unconditional grant revenue is recorded as revenue at the time the Society is aware of a commitment from the funding body. Grant revenue is recorded as revenue over the period of time when it is expended on allowable expenditures. The unexpended portions of both are deferred and included in current liabilities on the balance sheet.

b) Capital Assets

Capital asset purchases are generally funded by way of operating revenues, and are accordingly recorded as expenditures in the Statement of Revenues and Expenditures. These assets are also capitalized on the Balance Sheet and removed at the time of disposition or retirement.

c) Amortization

The Society does not amortize its capital assets.

Dianne Chiasson, Accountant

EDWARD MILNE COMMUNITY SCHOOL SOCIETY

NOTES TO THE FINANCIAL STATEMENTS
(Unaudited-See Notice to Reader)

FOR THE YEAR ENDED, JUNE 30, 2020

2. SIGNIFICANT ACCOUNTING PRINCIPLES – (Continued)

d) Kathy Kirk Memorial Fund

The Society maintains funds donated in trust. Interest generated on such funds is credited to the Trust Fund.

e) Donated Material and Services

The value of donated materials and services is not recorded in these financial statements.

f) Income Taxes

The Society is a registered charity within the meaning of the Income Tax Act (Canada), and is therefore exempt from income taxes on its net operating revenues.

3. RESTRICTED FUNDS

a) Kathy Kirk Memorial Fund

	<u>2020</u>	<u>2019</u>
Kathy Kirk Memorial Fund – Cash	<u>\$ 8,514</u>	<u>\$ 8519</u>

The invested funds represent B.C. Credit Union deposits, which the Society has reserved for specific purposes.

b) Gaming Funds (Statement 1(b), Note 6)

Pursuant to the terms of the Society's license with the Public Gaming Branch, Province of British Columbia, gaming proceeds may be used for scholarships, library materials, computers, playgrounds, trophies and awards, uniforms and equipment, performing arts, local travel and capital projects, upon approval from the Commission.

c) Projects (Statement 1(b), Note 6)

From time to time, the Society enters into contracts or receives grants to facilitate specific projects as stipulated by the funder. This funding is restricted for the sole use of the particular project and is governed by the terms of either the contract or grant.

Dianne Chiasson, Accountant

EDWARD MILNE COMMUNITY SCHOOL SOCIETY

NOTES TO THE FINANCIAL STATEMENTS

(Unaudited-See Notice to Reader)

FOR THE YEAR ENDED, JUNE 30, 2020

4. CAPITAL ASSETS	2020	2019
Piano, Theatre & Office Equipment	\$ 32,800	\$ 32,150
Public Art - Whale Skeleton	12,473	12,473
	<u>\$ 45,273</u>	<u>\$ 44,623</u>
 5. GRANTS, DONATIONS & FUNDRAISING	 2020	 2019
Operating Grants:		
-Sooke School Dist. #62 - Community Link	\$ 5,000	\$ 5,000
-Province of BC - Gaming	15,000	20,000
	<u>20,000</u>	<u>25,000</u>
Literacy:		
-Decoda Literacy Solutions	\$ 15,931	\$ 15,931
-Decoda Literacy Solutions - Displaced Workers	10,000	10,000
-Decoda -Raise a Reader	1,613	1,613
-Decoda -WestShore Solutions	15,931	-
-Sooke S. D. #62 -Books for Breakfast	-	2,800
	<u>43,475</u>	<u>30,344</u>
Play & Learn Summer Camp:		
-University of BC-Pacific Institute for the Mathematical Sciences	\$ 2,000	\$ 4,000
-Government of Canada - HRSDC	10,083	9,547
-Excellence in Literacy Foundation	2,000	2,000
-Rotary Club of Sooke	2,000	2,000
-Edith Lando Foundation	2,000	-
-Coast Capital Savings Credit Union	-	2,500
-Edward Milne Community School Society	7,000	13,000
-Sooke Harbourside Lions	500	1,000
-Canada Helps	480	-
-Dr. M.E. Roberston	1,000	-
-Other	32	-
	<u>27,095</u>	<u>34,047</u>
Youth Engagement:		
-Vancouver Island Health Authority -West Shore/Sooke Youth Engagement	\$ -	\$ 47,856
-District of Sooke	-	3,400
-Government of Canada - HRSDC	4,546	3,695
-Burnside/Gorge Community Association	-	2,000
-Other - Donations/Fundraising	350	554
	<u>4,896</u>	<u>57,505</u>
MakerSpace		
-Telus	\$ 20,000	\$ -
Whale of a Tale		
-SD#62 (Sooke)	\$ 3,000	\$ -
-Rotary Club of Sooke	500	-
-Edward Milne Community School Society	1,000	-
-Donations	250	-
	<u>4,750</u>	<u>-</u>
Garden Project		
-SD#62 (Sooke)	\$ 16,500	\$ -
Other:		
-Theatre - Fundraising	\$ 13,177	\$ 3,381
-Other - Fundraising	2,105	603
	<u>15,282</u>	<u>3,984</u>
 TOTAL OF ALL GRANTS, DONATIONS & FUNDRAISING	 \$ 151,998	 \$ 150,880

EDWARD MILNE COMMUNITY SCHOOL SOCIETY

NOTES TO THE FINANCIAL STATEMENTS

(Unaudited-See Notice to Reader)

FOR THE YEAR ENDED, JUNE 30, 2020

6. RESTRICTED FUNDS PROJECTS

The following Projects referred to in these financial statements as "Operating and Unrestricted Funds Projects" are managed at the discretion of the Society: (Statement 1A)

Theatre Operations
Theatre Projects
Community Fundraising Events
Makerspace Project
Whale of a Tale Project

The following Projects referred to in these financial statements as "Externally Restricted Projects" are Grants having a specific use and purpose which are restricted and are as follows: (Statement 1B)

Gaming	Community Gaming Grants Branch - Prov. Of BC
Good Food Box Program	Island Health Authority
Play & Learn Summer Camp	Govt. Of Canada - HRSDC Grant plus various Community Grants
Literacy Outreach Coordinator & Programs	Decoda Literacy Solutions
Literacy Displaced Workers - Sooke Region	Decoda Literacy Solutions
Literacy Outreach Coordinator - West Shore	Decoda Literacy Solutions
Youth Engagement Program	Govt. Of Canada - HRSDC and District of Sooke Grants
West Shore-Sooke Youth Engagement	Island Health Authority
EMCSS Theatre Seats Replacement Project	EMCS Society - Director's Motion on April 18, 2019
Sooke-West Shore Garden Project Coordinator	Horner Foundation

EDWARD MILNE COMMUNITY SCHOOL SOCIETY
CONTINUITY OF RESERVES
(Unaudited-See Notice to Reader)
FOR THE YEAR ENDED, JUNE 30, 2020

	<u>2020</u>	<u>2019</u>
KATHY KIRK MEMORIAL FUND (Note 2(d))		
BALANCE, beginning of the year	\$ 8,519	\$ 8,386
Bursaries awarded	(200)	-
Interest earned	195	133
 BALANCE, end of the year	 <u>\$ 8,514</u>	 <u>\$ 8,519</u>