

A detailed botanical line drawing of a plant. The plant features large, deeply lobed leaves with prominent veins and a textured surface. A central flower stalk rises from the foliage, topped with a large, open flower. The drawing is executed in a fine-line, etched style. A large white circle is superimposed over the center of the image, containing the title and year.

ANNUAL REPORT

2016 / 2017



THIRTY YEARS

Celebrating 30 years with the EMCS Society is a great honour. Four years into this role, I have only been a blink in its lifetime. So much time, energy, and passion has been put into this organization by the staff and volunteers before me.

In this celebratory report, I wanted to share with you a glimpse of the programs that have been offered through the years. From our very first programs to present day, this report is a bit of a time capsule. It demonstrates the needs and desires of the community at different periods, through the eyes of our past and present coordinators and board members.

No matter what year you look at, you will notice a mix of creativity and practicality. As I reflect on the practical courses, I am amazed at how quickly things change, especially with technology. It was nice to go through years of old program guides to see certifications like First Aid being offered year after year. I am also inspired by the creative courses of the past and look forward to integrating them into our future.

I am happy to be celebrating this moment with you and thank you for your time and dedication to the success of this great organization.



Ebony Logins
Community School Coordinator



STAFF

Ebony Logins & Anne Bell
Community School Coordinators

Reta Vasey
Program Office Assistant

Laura Lucina & Heather Cormier
Duty Hosts

Stephanie Croft
Literacy Outreach Coordinator

Thom Southwood
Community Theatre Coordinator

Brownwyn Behm, Rhys Pugh & Marion Stupich
Summer Camp Coordinators

Nicole Oyler & Bryden Stewart
Summer Camp Assistants

Alison Sudlow
Summer Camp Leader

Brady Greenwood
Outdoor Literacy Coordinator

Triston Line & Quin Johnson
Theatre Techs

Chelsea Forbes
Social Media Intern

Dianne Chaisson
Accountant



2016 - 2017 BOARD OF DIRECTORS

Jeff Bateman
President

Michael Young
Past President

Christine Bossi
Vice-President

Kate Barton
Secretary

Susan Percival
Treasurer

Patrick Swinburnson
Director-at-Large

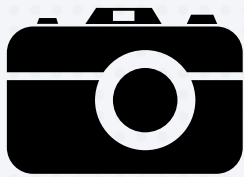
Triston Line
Director-at-Large

Loretta Deutscher
Director-at-Large

Willy Burrows
Director-at-Large



THE FIRST 10 YEARS



1987

Intro to Computers
Wood Carving
Motorcycle Club
GED Prep
Shiatsu

1988

Maintaining Your Chainsaw
Salmon Net Mending
Mexican Flea Market
Sooke Toastmasters
Stained Glass

1989

Decoy Carving
Heritage Tours
Whale Flensing
Folk Dance

1990

Swimming at Sunny Shores
Organic Winter Gardening
Mushroom Walk
Pottery

1991

Heli-Hiking the San Juan Ridge
African Talking Drums
Babysitter Training
Sooke Youth Choir

1992

Medical Terminology
Longboat Coxswain Training
Gymnastics
Fly Tying

1993

Erotic Poetry Reading
Dog Obedience
Bread Making
Line Dancing
Air Guns

1994

Internet: What's all the Fuss?
Starting Your Own B&B
Kids & Macs
Tiny Houses
Modems

1995

Creating Your Own Advertising
Word Perfect Tips & Tricks
Self-Defense for Teens
Cooking Wild Harvest
Career Exploration

1996

First Nations Cultural Awareness
Teach Yourself to Type
Computer Drop-In
River & Roots
Potpourri

COORDINATOR'S REPORT

Another busy year for the EMCS Society has seen us working hard to improve upon the services we offer and to expand and strengthen our community partnerships. This report outlines many of the successes that the Society has enjoyed over the past year. There have been a few highlights as well:

ebony
logins

anne
bell

The Barney Bentall concert raised over \$11,000 for the Sooke Food Bank and we are happy to report that the event will be taking place yet again this year with the Society's involvement. A donation of \$1,000 was provided to EMCS for the purchase of a dual charging station. We have developed a relationship with the United Way of Greater Victoria to open a Makerspace in EMCS that will open in the Fall of 2017 to students and community members.

Operationally, we attended workshops on the New Societies Act and worked with the board to update our governance policies. We are also transitioning to online pay and donations. New equipment was purchased for the Sooke Community Theatre. The website is better than ever. We are expanding always in all ways.

This has been a truly wonderful year thanks to our talented and passionate staff and volunteers. We would like to extend a special thank you to Reta Vasey, who really keeps this place glued together!

Happy 30th, EMCS Society.

Ebony Logins & Anne Bell
Community School Coordinators





PRESIDENT'S REPORT

Times doesn't fly, it sprints like Usain Bolt in his sub-9.7 world-record prime. Last fall we celebrated the 20th anniversary of the EMCS new-build, a period that zipped by amazingly fast for many of those involved in creating Sooke's sparkling new community school. And it seems like just the other week that I was writing last year's report, stringing words together in an attempt to capture the people, flavour and achievements of the EMCS Society, now an eyeblink 30 years old itself.

The report you hold in your hands covers the 2016/17 landscape thoroughly. As you'll see, the Society continues to live up to the mission statement enshrined in our founding constitution. Our purpose, it reads, is "to partner with the students, parents and the community to build a safe, supportive and challenging learning environment that enables people to make a living, make a life and make a difference." It's a big, open-ended vision that, within necessary personal and fiscal limits, the board and EMCSS staff address in professional, creative, efficient fashion.





In addition to all else discussed in these pages, the current board dedicated considerable time to last year's SOAR (Strength Opportunities Aspirations Results) brainstorming report. It paints a positive picture about business as usual: Committed and qualified staff; ultra-tight bookkeeping; strong relationships with many Sooke organizations; solid, stamp-of-approval support from SD #62; and a diverse menu of programs for adults, young people and vulnerable youth.

SOAR also identified intriguing future directions. We're delighted about the advent of the Makerspace at EMCS, every Sooke handyman's dream come true. We're doing a better job of promoting continuing education now that our programs are highlighted in SEAPARC's activity guides. And our focus is turning to the EMCS Community Theatre, which needs some loving care after two decades of loyal service. We intend to seek grants, lobby for renovation funding from the school board and raise our own cash through events like Sooke Talks, a TED-style evening planned for early 2018 to showcase a fraction of the diverse, colourful and accomplished Sookies living in our midst.

In closing, I'd like to extend warm appreciation to our 2016/17 board: VP Christine Bossi, Secretary Kate Barton, Treasurer Susan Percival, Past-President Michael Young and directors-at-large Willy Burrows, Triston Line, Loretta Deutscher, and EMCS Principal Pat Swinburnson. We'd certainly be lost and adrift without the daily love and care poured into society operations by our office team of Anne Bell, Ebony Logins and Reta Vasey. Gratitude also to our past/past/past president Roger Temple, former SD #62 chair Bob Phillips and his fellow four-term Milnes Landing trustee Margot Swinburnson for your many contributions and ongoing commitment. Thank you all, together we can (and do) make a difference.

Jeff Bateman
President



PRINCIPAL'S REPORT

It has been an active year since the last annual report to the Edward Milne Community School Society. We had a record number of our graduates accepted into the University of Victoria. Our guest speaker at grad this year was an EMCS grad from 2000 who said that in her graduating class, six students went to UVic. This year past, we had 33 students go to UVic, with many more attending Camosun, UBC, Western and Queens. More than 100,000 dollars in scholarship money was awarded to our grads, which doesn't include entrance scholarships. Eight of our students received UVic entrance scholarships, some of whom received the award for all 4 years of their undergrad. Of the 12 students from British Columbia chosen to attend Pearson College, one was from EMCS, and he received a 70,000 dollar entrance scholarship. This year our students requested senior academic classes that required us to offer 3 Calculus 12 classes, 2 Physics 12, 2 Chemistry 12, and 3 Biology 12. English 12 AP (advanced placement) is fully subscribed and we are partnering with Camosun to offer Dual Credit courses in Math, Biology, and Economics. One of our school goals over the past six years has been to increase our academic achievement, and these statistics seem to indicate that we are on the right path.

Our building has received several upgrades in the past year, including a new roof and increased bandwidth from TELUS. Our welding program has expanded with an infusion of industry money. Four new welding booths have been added including the ventilation and 4 state of the art welders. The amphitheater, which has sat unfinished since the construction of this building 21 years ago, is now being completed with concrete and outdoor seating. The amphitheater project is more than just finishing a long overdue project. It fits exactly with what has been the other of our main goals for the past six years. We have explicitly attempted to increase our students' sense of belonging, and one way to do that is to provide places for students to gather. When it is break time, we want our students to stay on campus but if we don't supply gathering places then this is a difficult goal to achieve.



patrick
swinburnson

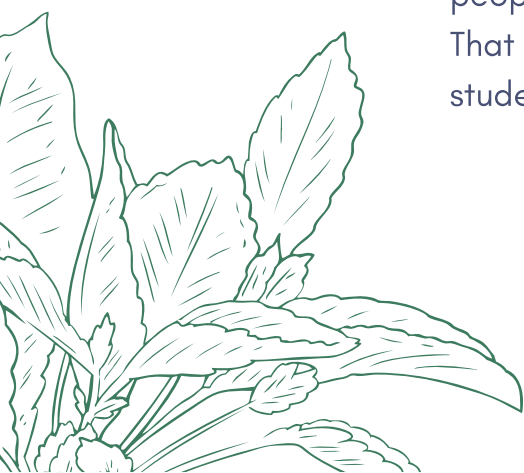




We have hit our enrollment targets this year which means the staffing that we have in place is fully funded. This year we have 61 international students in the building from all over the world, including Spain, Turkey, Switzerland, China, Brazil, Japan, Austria, Germany, Korea, Mexico and Columbia. They are a tremendous addition to our school and add an invaluable cultural diversity to our student body. Their presence also pays the wages of more than 2 of our teachers. Class sizes are smaller this year, due to the Supreme Court decision previously handed down. That means we have had to hire more teachers, many of whom are very early in their careers. We have been very fortunate in our hires and our staff is looking as strong as it ever has. We have also been very fortunate to be able to re-sign Anne Bell and Ebony Logins for the next three year as our co Community School Coordinators. This will give the Community school much needed continuity under the steady guidance and vision of experienced leadership.

There are many changes in education. We have a new grad program that as of next year will apply to all of our students. Technology is becoming a greater part of our program delivery. Students have google accounts where they receive and hand in their projects, and Career Cruising is an online program that helps students find the right career paths and ensures that they have the proper prerequisites. Digital projectors, document cameras and sound systems are an integral part of each classroom. The library has morphed into a "Learning Commons" and Aboriginal Ways of Knowing are now recognized as best practice that should be incorporated into all of our studies. To this end, we have formed a "Spirit Committee" which is tasked with producing a cultural plan for the school, based on the Coast Salish moons. One thing that remains constant in education, though, is that we are a business of people, and it is the passion of people that will always drive us forward. That is the great strength of our school, the quality of our staff and students.

Patrick Swinburnson
Principal & Director-at-Large



about us

A community school is both a place and a set of partnerships between the school and other community resources. Its integrated focus on academics, services, supports, and opportunities leads to improved student learning, stronger families, and healthier communities. Since June 1987, the EMCS Society Program Office has worked to build partnerships with individuals and organizations to provide lifelong learning opportunities for people of all ages in the Sooke region. The Society also oversees community education, cultural, and social programs, projects, and services developed to meet the needs of the community and optimize educational outcomes for vulnerable students.

SERVICE DELIVERY

The EMCS Society provides infrastructure and resources to coordinate and integrate community services and implement sustainable prevention-based strategies for children, youth, seniors, and families.

- Community Education
- Curriculum Enhancement
- Facility Rentals
- Health & Nutrition Programs
- Literacy Programs
- Youth Programs
- Fundraisers & Events



COMMUNITY SCHOOL ADVANTAGE

- Increases use of local public school facilities
- Integrates & coordinates existing public services
- Maximizes communication between school & community
- Enriches & enhances learning through formal & informal activities
- Reinforces a sense of community & improves quality of life in the region
- Improves communication between school & community
- Provides an opportunity for local residents to participate in community activities
- Residents, parents, staff, & students have opportunity to address community needs
- Develops means of improving economic well-being of the community
- Brings additional resources to the school

DECADE NO. 2



1997

Dried Flower Arrangements
Jazz & Modern Dance
Medical Terminology
Divorce Procedures
Corel Draw

1998

North West Coast Native Carving
Willow Furniture
Ballroom Dancing
Free Internet
Golf Lessons

1999

Installing Sprinkler Systems
Creating Webpages
Indonesian Food
Bee Course

2000

Wilderness Survival
Computer Animation
Writing After 50
Acupressure

2001

Healthy Skin with Essential Oils
Prostate Cancer Support Group
Workouts for Workaholics
Cougar & Bear Awareness
Rock Climbing

2002

PMS, Menopause & You
Photo Scanning Tips
Aging Youthfully
Beginner's Bridge
Juicy Organics

2003

Putting Your Garden to Bed
How to Read Tarot Cards
Beginner Quilting
Wine Tasting
VHF License

2004

Intro to Dreamweaver
Egyptian Bellydance
Stroller Fitness
Cartooning
Soft Pastels

2005

What to do with Chicken?
What is Your Dog Eating?
Mail Merge Word 2000
Chocolate Temperins
Hip-Hop & Freestyle Dance

2006

Building Immunity Naturally
Using Wild Plants of Sooke
Film School Workshop
Rush Hat
ESL

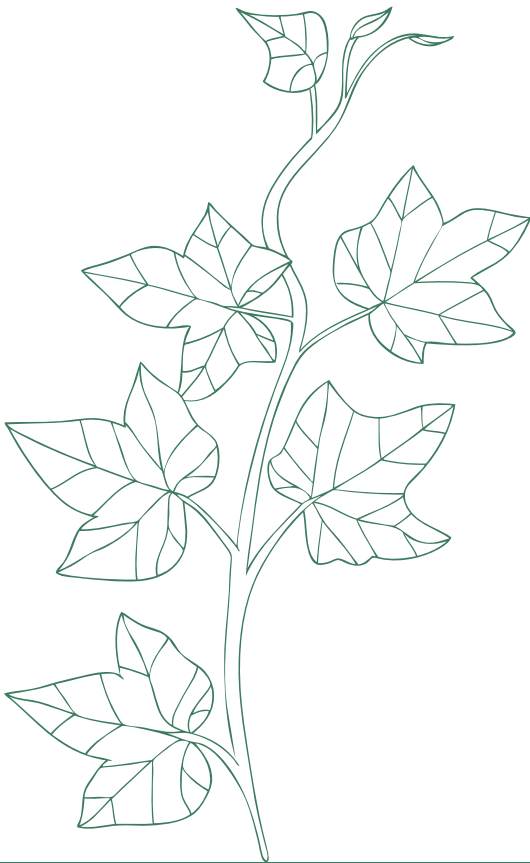


YOUTH ENGAGEMENT

The Youth Engagement Program began in the fall with a social media strategy conducted by Intern, Chelsea Forbes. Chelsea did a social media takeover for the Society, revised our previous intern's Social Media Guide, and created communications for local organizations. She also assisted the Sooke Makerspace and Sooke Region Literacy Project in developing new websites. Chelsea's position was funded by Industry Canada through the Comox Valley Volunteer Centre.

The Society received HRSDC funding and funding from the District of Sooke for the Youth Engagement Program. Brady Greenwood was hired as the Outdoor Literacy Coordinator. He coordinated the Trevor Purdy 3-on-3 Basketball Tournament, which was the most successful tournament in recent years with 9 teams registered. For the past 4 years, the tournament has had only 6 teams. The one-day event was held at Journey Middle School and moved to Edward Milne half way through the day due to heavy rain that made it too dangerous for the teams to compete at the outdoor courts. Brady also coordinated drop-in sports days, where up to 10 youth participated each day. This was usually basketball and sometimes frisbee or soccer. Beach cleanups were held at Ella Beach, Whiffen Spit, and Muir Creek, which attracted people of all ages. Approximately 10lbs of garbage was picked up on each trip. The District of Sooke provided gloves, garbage bags, and garbage pickers.

Two Summer Literacy Camp Assistants and one Camp Leader were hired for the Play & Learn Summer Camp. They spent two weeks with the Youth Engagement Program to assist with the basketball tournament and beach cleanups.



LITERACY OUTREACH

The Books for Breakfast program continues to be a popular preschool reading group that meets once a month. The program was offered in Sooke and East Sooke this last year. With the financial assistance of the Sooke School District, we provided a quality book for each family to take home. Our meeting space in Sooke was provided by the Sooke Family Resource Society and we paid a minimal fee for a space at the East Sooke Community Hall. We met once a month in each community from September to May (except for December).

In East Sooke, we had 10 families registered with an average of 4 kids and 3 adults in each session. In Sooke, we had 31 families registered and an attendance of 10 kids and 7 adults on average per session.

We plan to continue to offer the Books for Breakfast program in East Sooke and Sooke for this 2017-2018 season.

This book exchange program continues to be a great success in Sooke. We have bins at SEAPARC, the Health Centre at T'Souke First Nation, the Sooke Family Resource Society Centre and the Pacheedaht First Nation Health Centre. We are in the process of building a new bin to be housed here at the Edward Milne Community School in front of the program office.

This winter, we will begin filming to have the Book Bin program featured in a Shaw TV Community Producers program.



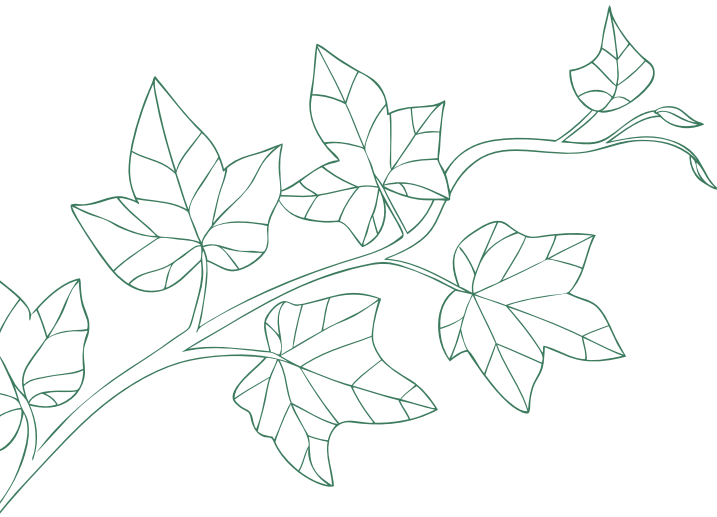
For Family Literacy Day 2017, we incorporated the theme of making music into our event. We wanted to do something that got families creating and learning as opposed to spectating. Collaborating with Zero Waste Sooke, the Sooke Branch of the Vancouver Island Regional Library, Makerspace and EMCS Society, we put on an instrument making workshop using upcycled materials that wrapped up with an opportunity to play the newly-made instrument. Close to 70 people participated in the free event: 40 children, 20 adults and 10 staff and volunteers.

For Family Literacy Day 2018, we are in the process of booking storyteller David Bouchard. The event will take place on January 28 in the Community Theatre.
New Website

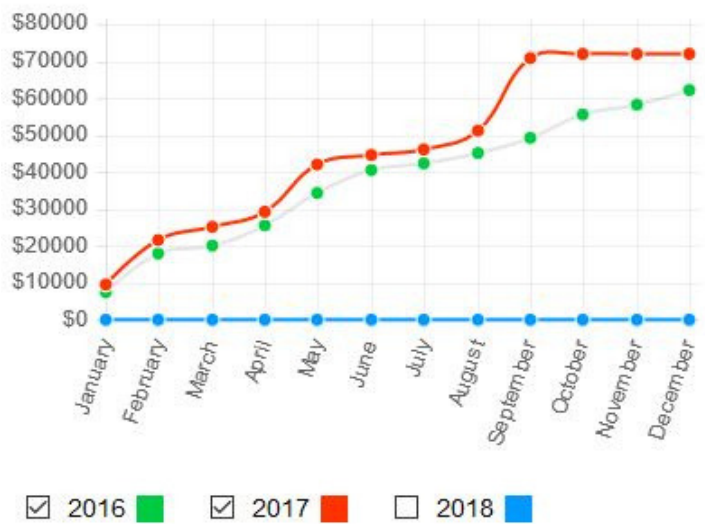
The Sooke Region Literacy Outreach Coordinator and the three other Literacy Outreach Coordinators (Saanich, Victoria and Westshore) worked together to create a new shared website:
www.southislandliteracy.com.

BookKing

With an updated BookKing system, the Society can efficiently track and manage facility bookings, programs, and overall revenues.



Total Revenue: By Year



COMMUNITY EDUCATION

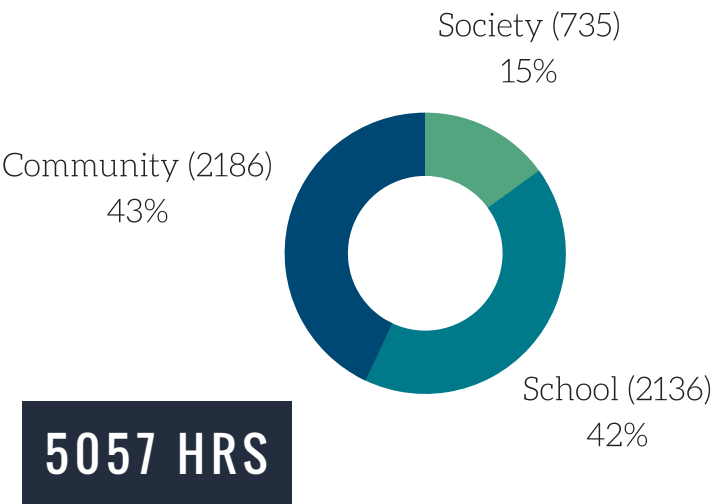
This has been yet another successful year for community education programs. An additional 82 participants joined us for 42 courses – 2.5 times more courses than last year. This is mostly due to monthly Serving it Right, WHMIS, and Foodsafe classes. The number of students per class has dropped due to this change, but the additional participation is welcomed!

FACILITY USAGE

The EMCS Society booked over 8,900 hours of facility use in Sooke schools. Over 5,000 of these hours were booked out of Edward Milne Community School.

The Society used 735 hours for programs, on par with last year's 739 hours.

Extra-curricular events at EMCS marked 2,136 hours and community use was slightly higher at 2,186 hours.



5057 HRS





338



252



654



14,178

SOCIAL MEDIA

With help from social media interns, staff, and board members, the Society has grown its social media following.

Facebook advertisements have successfully increased class participation and general awareness of Society programs.

GOOD FOOD BOX

The EMCS Society renewed its contract with the IHN to receive referrals for the Good Food Box and Cooking Out of the Box classes. Referrals are down by 43% this year.

GFB orders are also down from 354 last year, but the cooking class is remaining successful (last year: 111).

290

GFB Orders

71

IHN Referrals

95

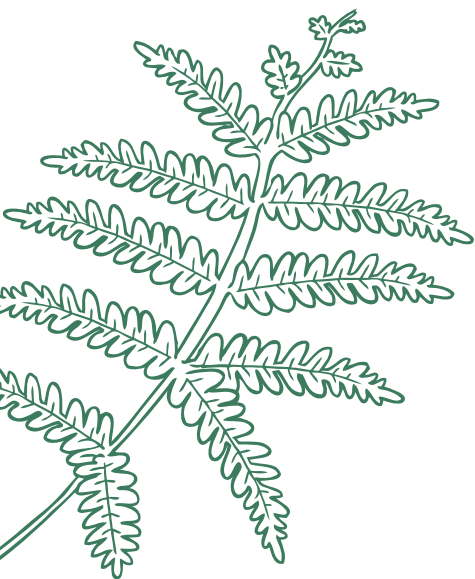
Cooking Classes

SCHOOL SUPPORT

The EMCS Society assists Edward Milne Community School and the Sooke School District with financial and in-kind contributions. Providing munch cards for students who do not have lunches, funding for educational programs and field trips, and administration for the Athletics program are some examples.

This year, the Society continued its assistance to the EMCS Wellness Centre by providing funding for snacks, beverages, furniture, and crafting supplies.

The EMCS Makerspace partnership was also developed and the Makerspace will open in 2017. The United Way, Sooke School District, EMCS, and EMCS Society have worked with community members to bring in new equipment to be used by the school and community. This creative and inspirational place will provide the community with opportunities for crafting, building, experimentation, and entrepreneurship.





COMMUNITY THEATRE

David Gogo Concert

Acting Out Camp

Annie in Sooke

Fair Vote Canada

JDF Forest Watch

20th Anniversary Celebration

Awareness Film Night

Games Days

Youth for Change Movie Night

UVic Application Night

Screenagers

The Nutcracker

Blithe Spirit

Dalai Lama: Compassion in Action Film

Sooke Sing Out

Piano Recital

Carole's Mini Show

Sooke Youth Show Choir

INTO THE THIRTIES



2007

Numerology for Your Home
Growing Amazing Tomatoes
Blacksmithing for Women
Herbal Beer Making
Fruit Tree Picking

2008

Appetizers for Entertaining
Word/Excel/Powerpoint
Reflexology
Calligraphy
Reiki

2009

Marketing Your Business
Teen Yoga Club
Blogging
Making Tapas

2010

Fun with Lego Mindstorms
Digital Photography
Crotchet Scrubbies
Blackberry 101

2011

Greenhouse Construction
Planting Calendar Workshop
Salad Through the Seasons
Medicinal Herb Walk
Chickens 101

2012

Intro to Buddhist Meditation
Middle Eastern Dance
Intro to Social Media
Taoist Tai Chi
Zumba

2013

Facebook & Twitter for Seniors
Dog Bite Safety Seminar
Jewelry Repair
Ready to Rent
Indian Cuisine

2014

Computers for Older Beginners
Suicide Risk & Assessment
Mom & Baby Sign Language
Stained Glass
Blues Guitar

2015

Mindfulness: Stress Reduction
Destigmatizing Mental Health
Websites & Online Presence
Spring League Basketball
Blues Guitar

2016

Discovering Local Seaweeds
Driftwood Christmas Tree
Can I Eat That Mushroom?
Conversational Spanish
Kitchen Garden

2017

Romancing the Debut Novel
Latin & Swing Dance
Ballroom Dance
Serving it Right, WHMIS & Foodsafe

EDWARD MILNE COMMUNITY SCHOOL SOCIETY

FINANCIAL STATEMENTS
(Unaudited-See Notice to Reader)

JUNE 30, 2017

INDEX

Notice to Reader Engagement Report
Statement 1 – Revenues & Expenditures Statement
Statement 1A – Operating & Gaming Detail Summary
Statement 1B – Projects Detail Summary
Statement 2 – Investment in Capital Assets
Balance Sheet
Notes to the Financial Statements
Schedule 1 – Continuity of Reserves

Dianne Chiasson, Accountant

Dianne Chiasson

Accountant
947 Deloume Road
Mill Bay, B.C. V0R 2P1

Phone: 250-733-2299
E-Mail: dianne9@shaw.ca

NOTICE TO READER ENGAGEMENT REPORT

To: THE DIRECTORS,
EDWARD MILNE COMMUNITY SCHOOL SOCIETY

I have compiled the balance sheet of Edward Milne Community School Society as at June 30, 2017 and the statements of revenues and expenditures for the year then ended from information provided by the Society. I have not audited, reviewed or otherwise attempted to verify the accuracy or completeness of such information. Readers are cautioned that these statements may not be appropriate for their purposes.



Accountant

Mill Bay, B. C.
September 15, 2017

EDWARD MILNE COMMUNITY SCHOOL SOCIETY
STATEMENT OF REVENUES AND EXPENDITURES
(Unaudited-See Notice to Reader)
FOR THE YEAR ENDED, JUNE 30, 2017

	<u>2017</u>	<u>2016</u>
REVENUES (Note 1)		
Operating (See Statement 1A) (Note 2(a))	\$ 70,956	\$ 75,446
Operating-Restricted Projects (See Statement 1A) (Note 2(a)&3(c) & Note 7)	45,342	35,486
Gaming (See Statement 1A) (Note 2(a) & 3(b))	20,004	20,007
Projects-Restricted Funds (See Statement 1B) (Note 2(a)&3(c) & Note 7)	52,179	54,334
	<hr/>	<hr/>
	\$ 188,481	\$ 185,273
	<hr/>	<hr/>
EXPENDITURES (Note 1)		
Operating (See Statement 1A) (Note 2(a))	\$ 68,920	\$ 54,525
Operating-Restricted Projects (See Statement 1A) (Note 2(a))	38,005	20,132
Gaming (See Statement 1A) (Note 2(a) & 3(b))	16,505	21,755
Projects-Restricted Funds (See Statement 1B)(Note 2(a)&3(c))	45,793	76,700
	<hr/>	<hr/>
	169,223	173,112
 Increase (Decrease) in Funds Held for Specific Purposes		
Operating	2,036	20,920
Operating -Restricted Projects (Note 2(a)&3(c))	7,337	15,354
Gaming - (Note 2(a) & 3(b))	3,499	(1,748)
Projects-Restricted Funds (Note 3(c))	6,386	(22,365)
	<hr/>	<hr/>
	\$ 188,481	\$ 185,273
	<hr/>	<hr/>

Dianne Chiasson, Accountant

[illegible]

**EDWARD MILNE COMMUNITY SCHOOL SOCIETY
RESTRICTED FUNDS - PROJECTS SUMMARY
FOR THE YEAR ENDED, JUNE 30, 2017
(Comparative figures as at June 30, 2016)**

[illegible]

EDWARD MILNE COMMUNITY SCHOOL SOCIETY
STATEMENT OF INVESTMENT IN CAPITAL ASSETS
(Unaudited-See Notice to Reader)
FOR THE YEAR ENDED, JUNE 30, 2017

	<u>2017</u>	<u>2016</u>
BALANCE, beginning of the year	\$ 34,637	\$ 33,680
Plus: Theatre Equipment	3,720	957
BALANCE, end of the year - (Note 2(b) & 4)	<u>\$ 38,357</u>	<u>\$ 34,637</u>

Dianne Chiasson, Accountant

EDWARD MILNE COMMUNITY SCHOOL SOCIETY

BALANCE SHEET
(Unaudited-See Notice to Reader)

JUNE 30, 2017

ASSETS

	<u>2017</u>	<u>2016</u>
CURRENT		
Cash - Operating Funds	\$ 91,136	\$ 74,858
- Restricted Funds - VIH-IIIIN (Note 7)	1,950	2,160
Accounts Receivable	29,524	30,129
Cash Held for Specific Purposes		
- Gaming (Note 2(a))	21,327	17,828
- Operating -Restricted Projects- (Note 3(c) & Note 7)	50,035	42,698
- Restricted Projects- (Note 3(c) & Note 7)	43,848	47,697
	<u>237,819</u>	<u>215,370</u>
RESTRICTED INVESTMENTS - Trusts (Notes 2&3)	8,538	8,446
CAPITAL ASSETS (Notes 2 & 4)	<u>38,357</u>	<u>34,637</u>
	<u>\$ 284,714</u>	<u>\$ 258,453</u>

LIABILITIES AND EQUITY

CURRENT			
Accounts Payable and Accrued Liabilities	\$ 13,184	\$ 13,077	
Accrued Liability - Sooke Works (Note 6)	-	28,724	
Funds Held for Future Purposes (Note 2(a))			
- Operating (Statement 1A)	\$ 82,915		
- Restricted Projects-Operating (Statement 1A)(Note 3(c)& Note 7)	50,035		
- Gaming (Statement 1A) (Note 2(a) & 3(b))	21,327	154,277	141,405
- I.H.N. - Punch Pass Program-Restricted (Note 3(c)& Note 7)		1,950	2,160
- Restricted Projects (Statement 1B) (Note 3(c)& Note 7)		68,658	62,272
		<u>238,069</u>	<u>247,638</u>
RESERVE FUNDS (Note 3)(Schedule 1)		8,288	8,446
EQUITY			
Unfunded Liability (Note 6)		-	(32,268)
Investment in Capital Assets (Statement 2)		38,357	34,637
		<u>\$ 284,714</u>	<u>\$ 258,453</u>

 Director
 Director

Dianne Chiasson, Accountant

EDWARD MILNE COMMUNITY SCHOOL SOCIETY

NOTES TO THE FINANCIAL STATEMENTS

(Unaudited-See Notice to Reader)

FOR THE YEAR ENDED, JUNE 30, 2017

1. NATURE OF ORGANIZATION

The organization is incorporated under the Society's Act of British Columbia. Its goals and objectives include providing community education and leisure programs for teenagers and adults of the Sooke Region. These financial statements do not include any of the revenues, expenditures, assets and liabilities of the Edward Milne Community School, which is part of the Sooke School District #62.

2. SIGNIFICANT ACCOUNTING POLICIES

a) Revenue and Expenses

Revenue and expenses are recorded according to the accrual basis of accounting, except donations and gaming revenues, which are recorded when received. Unconditional grant revenue is recorded as revenue at the time the Society is aware of a commitment from the funding body. Grant revenue is recorded as revenue over the period of time when it is expended on allowable expenditures. The unexpended portions of both are deferred and included in current liabilities on the balance sheet.

b) Capital Assets

Capital asset purchases are generally funded by way of operating revenues, and are accordingly recorded as expenditures in the Statement of Revenues and Expenditures, and are also capitalized from the Balance Sheet at the time of disposition or retirement.

c) Amortization

The Society does not amortize its capital assets.

Dianne Chiasson, Accountant

EDWARD MILNE COMMUNITY SCHOOL SOCIETY

NOTES TO THE FINANCIAL STATEMENTS
(Unaudited-See Notice to Reader)

FOR THE YEAR ENDED, JUNE 30, 2017

2. SIGNIFICANT ACCOUNTING PRINCIPLES – (Continued)

d) Kathy Kirk Memorial Fund

The Society maintains funds donated in trust. Interest generated on such funds is credited to the Trust Fund.

e) Donated Material and Services

The value of donated materials and services is not recorded in these financial statements.

f) Income Taxes

The Society is a registered charity within the meaning of the Income Tax Act (Canada), and is therefore exempt from income taxes on its net operating revenues.

3. RESTRICTED FUNDS

a) Kathy Kirk Memorial Fund

	<u>2017</u>	<u>2016</u>
Kathy Kirk Memorial Fund – Cash	<u>\$ 8,288</u>	<u>\$ 8,446</u>

The invested funds represent B.C. Credit Union deposits, which the Society has reserved for specific purposes.

b) Gaming Funds

Pursuant to the terms of the Society's license with the Public Gaming Branch, Province of British Columbia, gaming proceeds may be used for scholarships, library materials, computers, playgrounds, trophies and awards, uniforms and equipment, performing arts, local travel and capital projects, upon approval from the Commission.

c) Projects (Statement 1(b)) (Note 5)

From time to time, the Society enters into contracts or receives grants to facilitate specific projects. This funding is restricted for the sole use of the particular project and is governed by the terms of either the contract or grant.

Dianne Chiasson, Accountant

EDWARD MILNE COMMUNITY SCHOOL SOCIETY

NOTES TO THE FINANCIAL STATEMENTS

(Unaudited-See Notice to Reader)

FOR THE YEAR ENDED, JUNE 30, 2017

4. CAPITAL ASSETS	<u>2017</u>	<u>2016</u>
Piano, Theatre & Office Equipment	\$ 25,884	\$ 22,164
Public Art - Whale Skeleton	12,473	12,473
	<u>\$ 38,357</u>	<u>\$ 34,637</u>
5. GRANTS & DONATIONS	<u>2017</u>	<u>2016</u>
Operating Grants:		
-Sooke School Dist. #62 - Community Link	\$ 5,000	\$ 5,000
-Province of BC - Gaming	20,000	20,000
	<u>25,000</u>	<u>25,000</u>
Literacy Solutions:		
-Decoda Literacy Solutions	\$ 15,931	\$ 16,221
-Decoda -Raise a Reader	1,639	1,587
-Decoda -Conference	-	250
-Sooke S. D. #62 -Books for Breakfast	1,400	1,400
-Literacy Solutions -In-Kind Donation - Book Bin Storage	2,700	2,400
-Rotary Club of Sooke - Book Bin	-	600
	<u>21,671</u>	<u>22,458</u>
Play & Learn Summer Camp:		
-Telus	\$ 575	\$ -
-Vancouver City Savings Credit Union	-	1,000
-University of BC-Pacific Institute for the Mathematical Sciences	-	3,000
-Government of Canada - HRSDC	7,766	4,912
-Excellence in Literacy Foundation	2,000	2,000
-Coast Capital Savings Credit Union	-	3,000
-Rotary Club of Sooke	2,000	2,000
-Edith Lando Foundation	-	1,800
-Edward Milne Community School Society	4,000	-
-Sooke Harbourside Lions	1,000	500
-TLC Fund for Kids - 1003 Q	1,700	-
-Canada Helps	193	-
-Other	475	-
	<u>19,709</u>	<u>18,212</u>
Youth Engagement:		
-District of Sooke	\$ 3,500	\$ 3,500
-Government of Canada - HRSDC	3,452	5,037
-Volunteer Comox Valley Society	2,755	4,202
-Seaflores Skin Care - Diane Bernard	500	-
-Other - Fundraising	593	-
	<u>10,800</u>	<u>12,739</u>
Other:		
-Makerspace	\$ 7,000	\$ -
-Theatre Projects - Carol Cave	-	600
-Theatre Projects - Sooke Harbour Players	-	600
-Other - Fundraising	207	-
-Community Fundraiser - Barney Bentall	-	2,152
-Community Fundraiser - Chilliwack Concert	-	2,329
	<u>7,207</u>	<u>5,681</u>
TOTAL OF ALL GRANTS AND DONATIONS	<u>\$ 84,387</u>	<u>\$ 84,090</u>

Dianne Chiasson, Accountant

EDWARD MILNE COMMUNITY SCHOOL SOCIETY

NOTES TO THE FINANCIAL STATEMENTS

(Unaudited-See Notice to Reader)

FOR THE YEAR ENDED, JUNE 30, 2017

6. UNFUNDED LIABILITY

The Sooke Works project divestment procedures have been completed by the Society.

The subsequent audit of the books and records of the Sooke Works project had resulted in the Society incurring costs resulting in an unfunded liability of \$32,268 .

The Society has received written notice from School District #62 which states this unfunded liability has been forgiven and is no longer the liability of the Society.

The resulting transactions are reflected in these Financial Statements.

7. RESTRICTED FUNDS PROJECTS

The following Projects referred to in these financial statements as "Operating - Restricted Projects" are as follows: (See Statement 1A)

Theatre Operations

Theatre Projects

Good Food Box Project

Community Fundraising Events

Makerspace Project

The funds to operate the above projects flow through the Operating Bank Account.

The following Projects referred to in these financial statements as " Restricted Projects" are as follows: (See Statement 1B)

Play & Learn Summer Camp

Literacy Outreach Coordinator & Programs

Youth Engagement Program

The funds to operate the above projects flow through the Projects Bank Account.

Dianne Chiasson, Accountant

EDWARD MILNE COMMUNITY SCHOOL SOCIETY
CONTINUITY OF RESERVES
(Unaudited-See Notice to Reader)
FOR THE YEAR ENDED, JUNE 30, 2017

	<u>2017</u>	<u>2016</u>
KATHY KIRK MEMORIAL FUND (Note 2(d))		
BALANCE, beginning of the year	\$ 8,446	\$ 8,213
Bursaries awarded	(250)	-
Interest earned	92	233
 BALANCE, end of the year	 <u>\$ 8,288</u>	 <u>\$ 8,446</u>

Dianne Chiasson, Accountant